

Responsible Restart Toronto

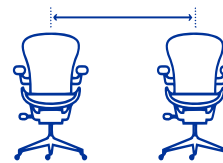
Workplace Resource design consultation services supports you with holistic considerations on employee safety and productivity as you plan returning to the physical work space. Our focus is to bring together scientific findings and local regulatory mandates to develop functional floor plans and furniture placement guides, addressing the current effects of COVID-19 and future planning. Our approach will dive into short term tactics that maximize employee safety and evolve with long term strategies for designing and managing engaging, productive work environments.

What types of floor plan adjustments can you make to promote physical distancing?

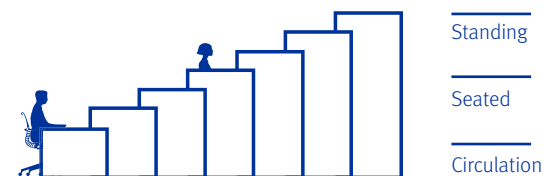
- Staggered Desk Assignment Scenario
- Dedicated Desk Assignment Scenario
- Reduce Occupancy of Enclosed Spaces
- Alternative Applications
- Prioritize Circulation Space and Sanitizing Stations
- Convert Meeting Rooms to Sanitizing and Storage

* https://www.centerforhealthsecurity.org/our-work/pubs_archive/pubs-pdfs/2020/200417-reopening-guidance-governors.pdf

What mitigation measures should you consider?*



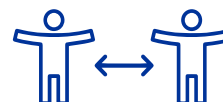
Physical Distancing — wherever possible having people work or access the business from home; this should include restructuring responsibilities to minimize the numbers of workers that need to be physically present.



Engineering Controls — creating physical barriers between people

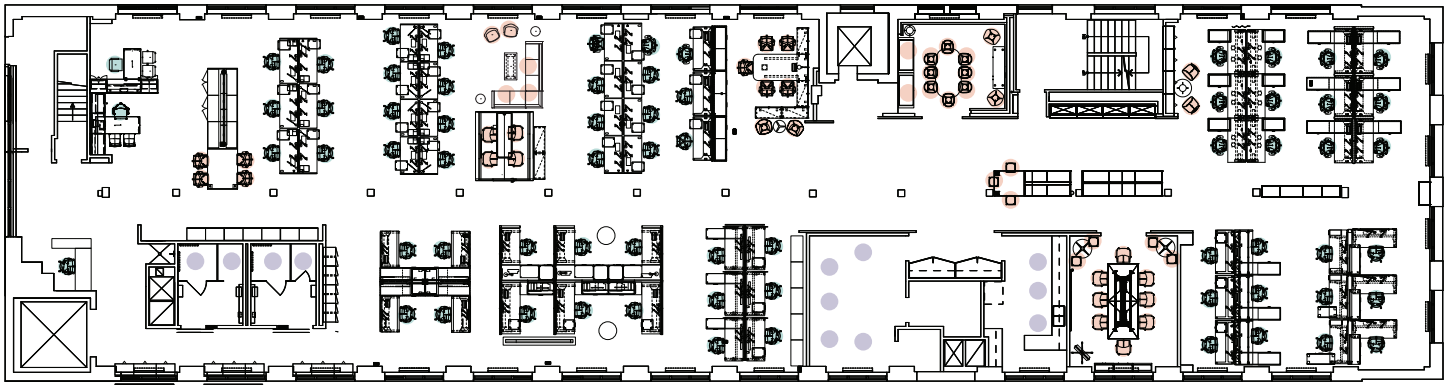


Administrative Controls — redistributing responsibilities to reduce contact between individuals, using technology to facilitate communication

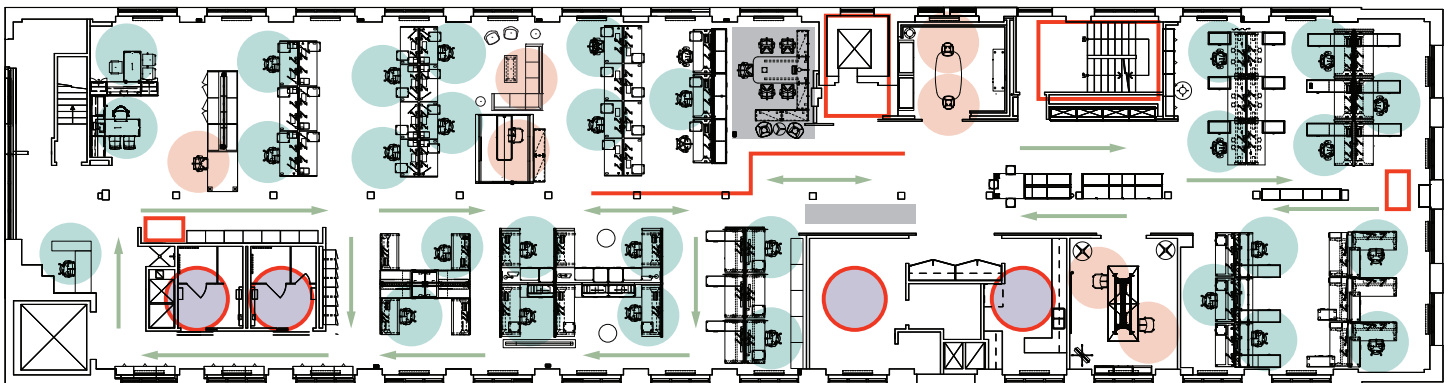


PPE — wearing non-medical cloth masks

Before > 100% Occupancy



6' or 2 Meters Physical Distancing > 30% Occupancy



Planning Service Deliverable

Workplace Resource can facilitate a 1-hour discovery session to understand your point of view, immediate and future concerns and desired outcome. We will review one floor and translated the data onto a floor plan (see above case study of our strategic approach) with suggestions to floor plate transformations that may include:

- boundary product recommendations
- sanitation stations
- physical distancing planning
- staggered workstation assignment
- hot spots and collaborative areas
- adjustments for open group areas.
- repurpose or maximize meeting spaces/lunch space
- circulation patterning planning
- guidance on materiality and cleaning protocols.

Physically distancing is not the single solution to COVID-19 pandemic future planning. A bundled approach can remind us that safety comes from a collection of interventions, including the organization's culture supports practices that promote health and safety, teaching and guidelines help influence employee behaviors and the built environment provides cues that influence behaviors and processes.